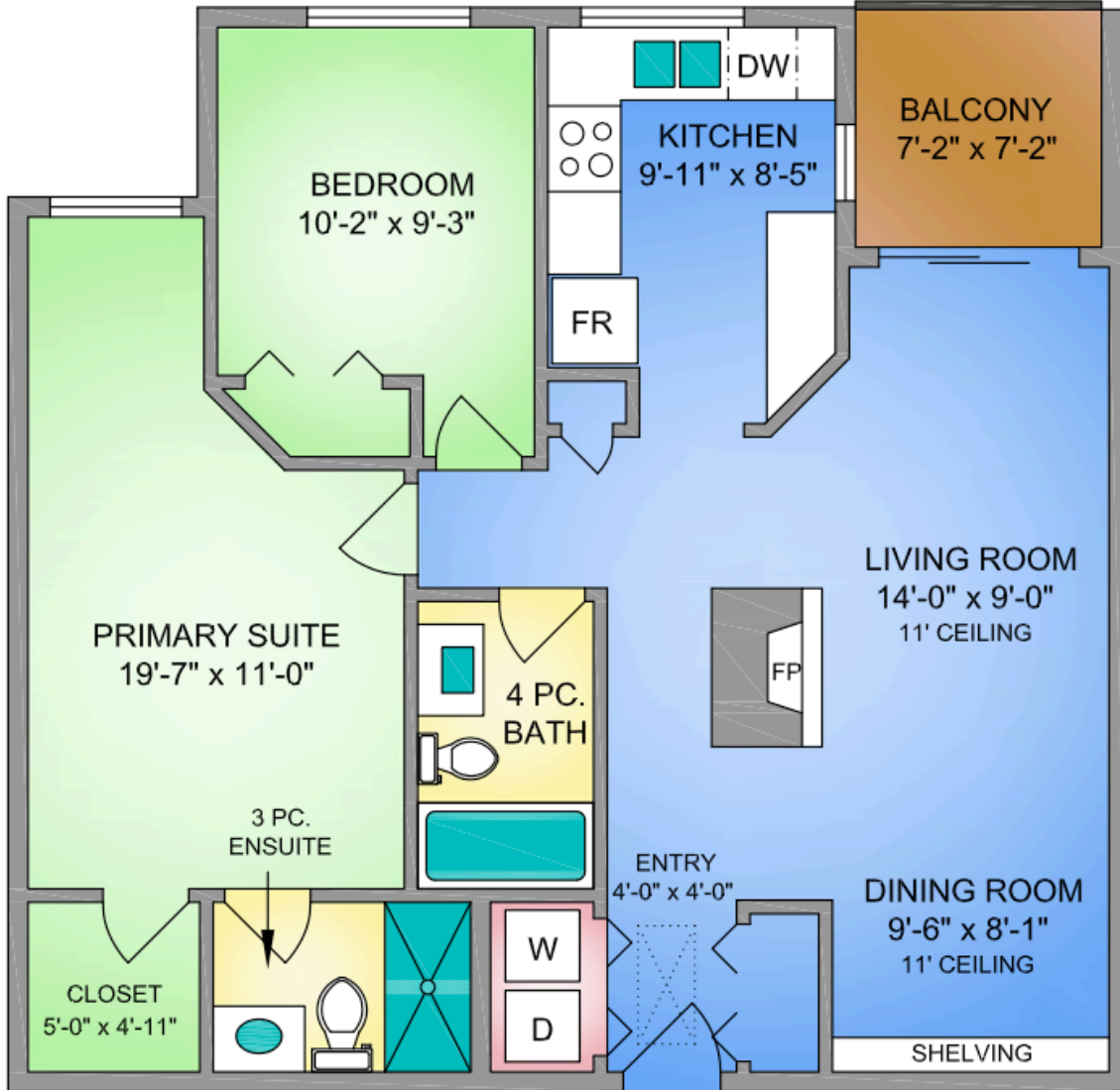


UNIT 408 - 649 BAY STREET
918 SQ. FT.
8' CEILING HEIGHT

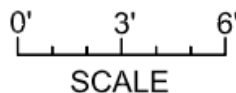
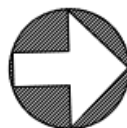


COLDWELL BANKER
OCEANSIDE
REAL ESTATE



250-884-9753
 matt@propermeasure.com
 www.propermeasure.com

NORTH



UNIT 408 - 649 BAY STREET		
SEPTEMBER 17, 2020		
PREPARED FOR THE EXCLUSIVE USE OF CHRIS KRUSE		
PLANS MAY NOT BE 100% ACCURATE, IF CRITICAL BUYER TO VERIFY.		
FLOOR	AREA (SQ. FT.)	
	FINISHED	BALCONY
FOURTH	918	50